



AEROKLAS

**LEISURE & COMMERCIAL CANOPIES
FITTING INSTRUCTIONS
NISSAN NP300 2016 ON**



Approximate Fitting Time: 90 Minutes

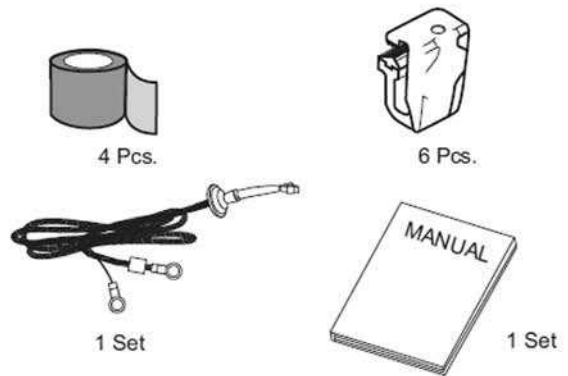
Contents Of Fitting Kit

Installation Manual x1

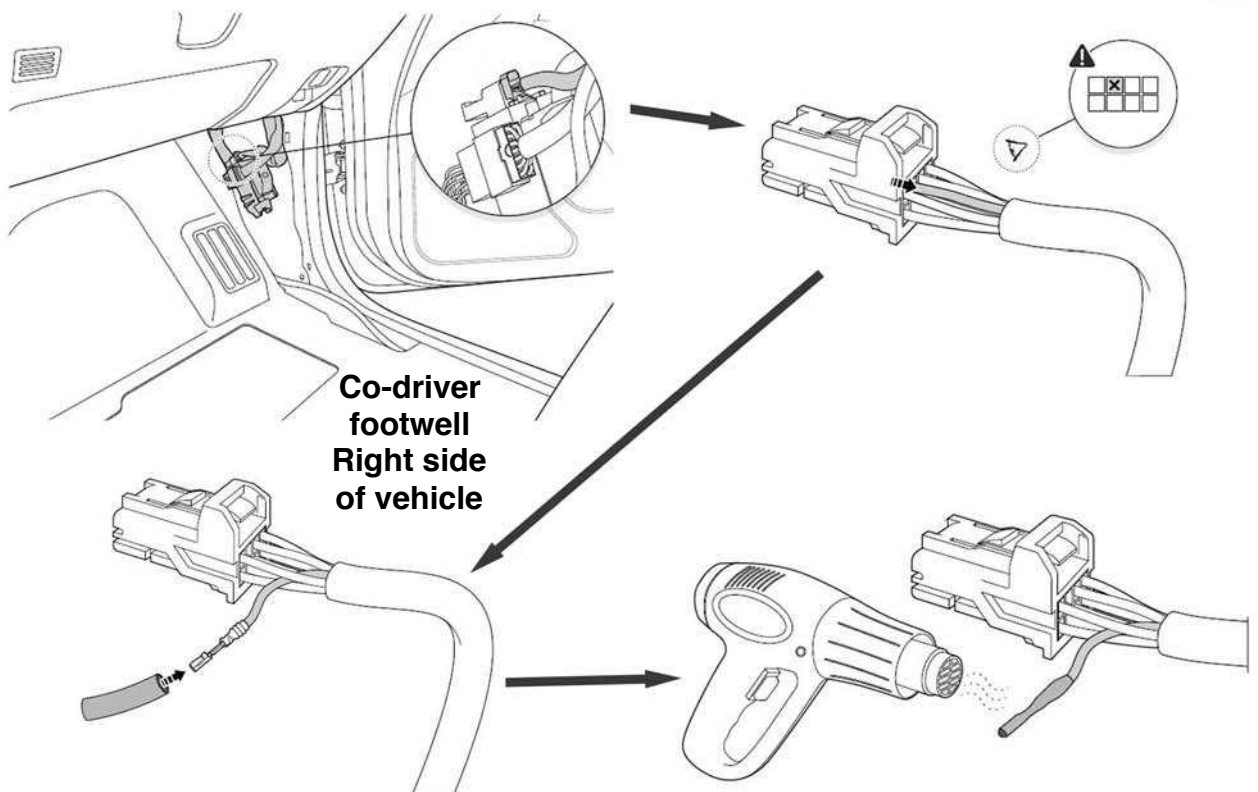
Mounting Clamps x6

Protection Tape x4

Wiring Loom x1



Fitting Instruction



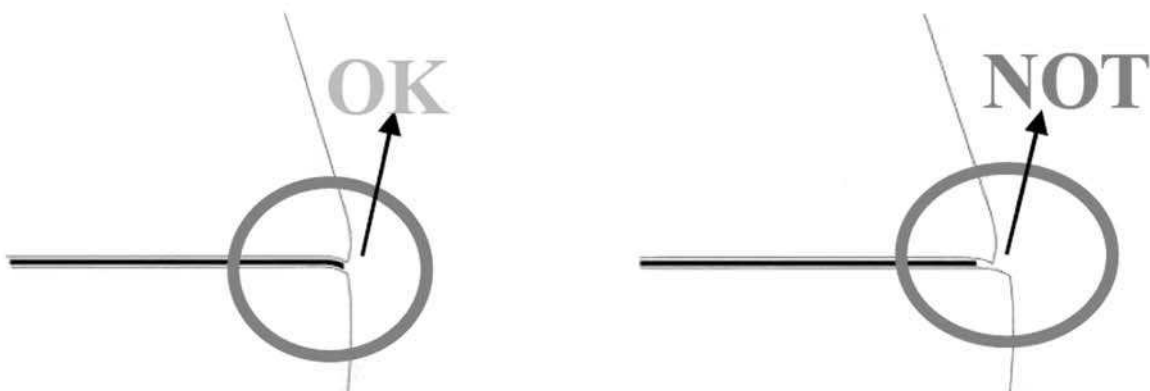
1. Remove the plug shown above which is located in **co-drivers** foot well behind the kick panel. Remove the pin shown and using heat shrink cover the pin to isolate the electrical connection. This pin disables the high level brake lamp, if the canopy is ever removed the pin can easily be replaced and the high level brake lamp will resume normal operation.

2. Degrease / Clean the top lip of the load bed including the tailgate and apply a bead of silicone between the bulkhead rail and the side load bed lip. This is to bridge and weatherproof the gaps between.

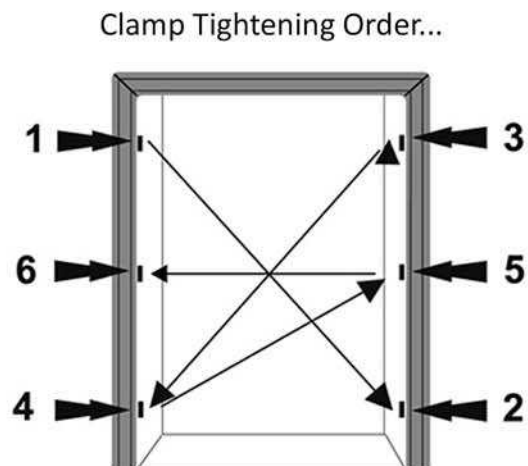
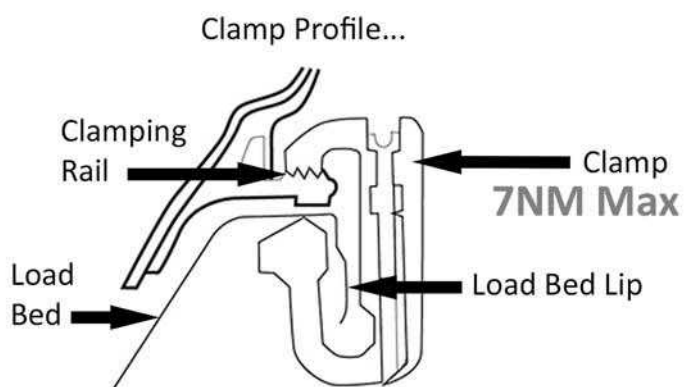


3. Unpack the Aeroklas canopy, make sure the tailgate on the vehicle is closed before placing the Aeroklas canopy onto the vehicle.

Position the canopy on the load bed correctly as per the diagram below.



4. Attach the supplied clamps to the alloy rail of the Aeroklas canopy and then onto the lip of the load bed. Make sure the clamps are spaced evenly before tightening the clamps equally to 7nm. Please note that the clamps fit above the C-Channel rail and not into it.



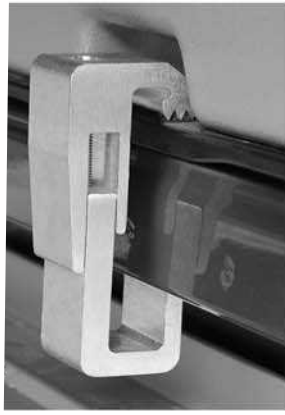
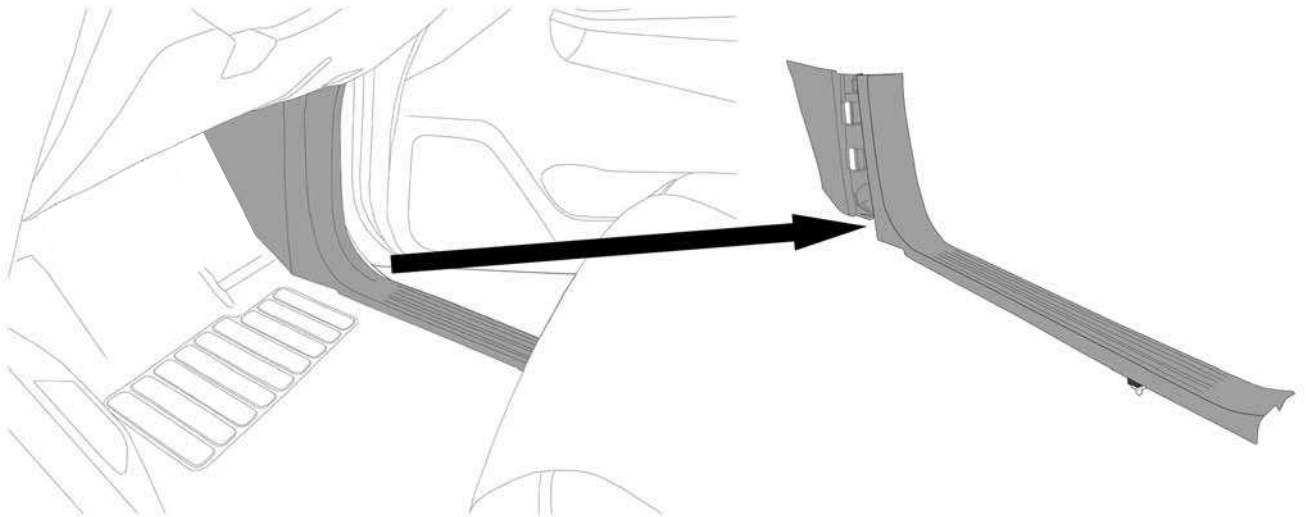


Image showing correct fitting of clamp on the lip of the load bed.

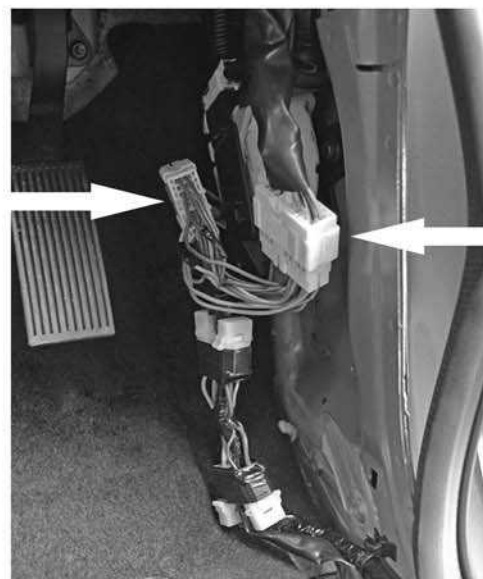


Image showing clamps fitting onto the canopy above the C-Channels and not into them.

5. Starting inside the cab on **co-driver** side foot well remove the sill plastic trim and the trim located behind this to expose the required plugs and vehicle wiring.



6. You will see a large white plug and socket as seen below (fig.1). Remove the plug on the vehicle and using the supplied canopy loom connect inline with the vehicles plug and socket again as shown the second below image (fig.2).





7. Feed the canopy loom behind the dashboard to the drivers side footwell. Secure wiring away from pedals to the black metal bar above the pedals.

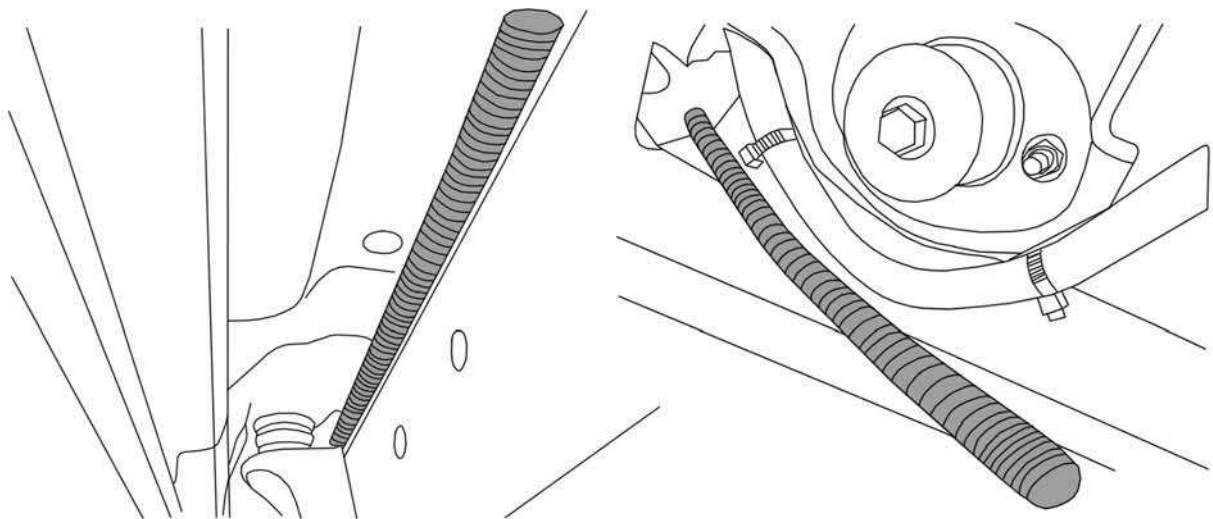
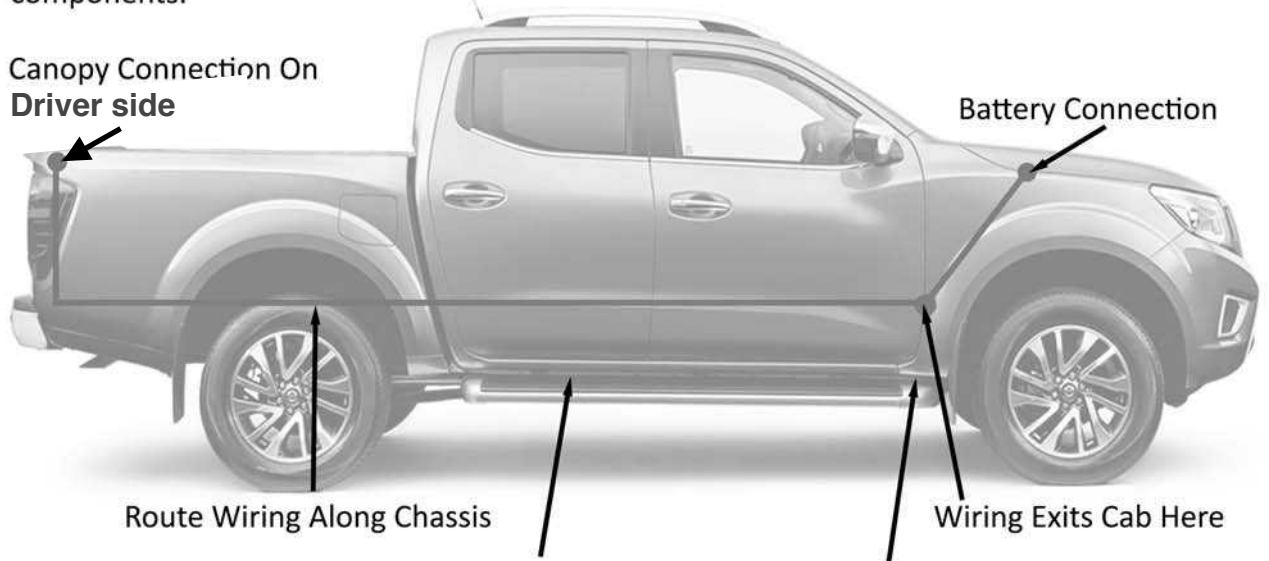


8. At the drivers side footwell remove the plastic trim. Behind the carpet you will find a small rubber grommet. Remove this grommet and feed the canopy loom through the hole. Continue until the majority of the wiring has passed through the hole and the grommet inline with the wiring fills the space where the original vehicle grommet once was.

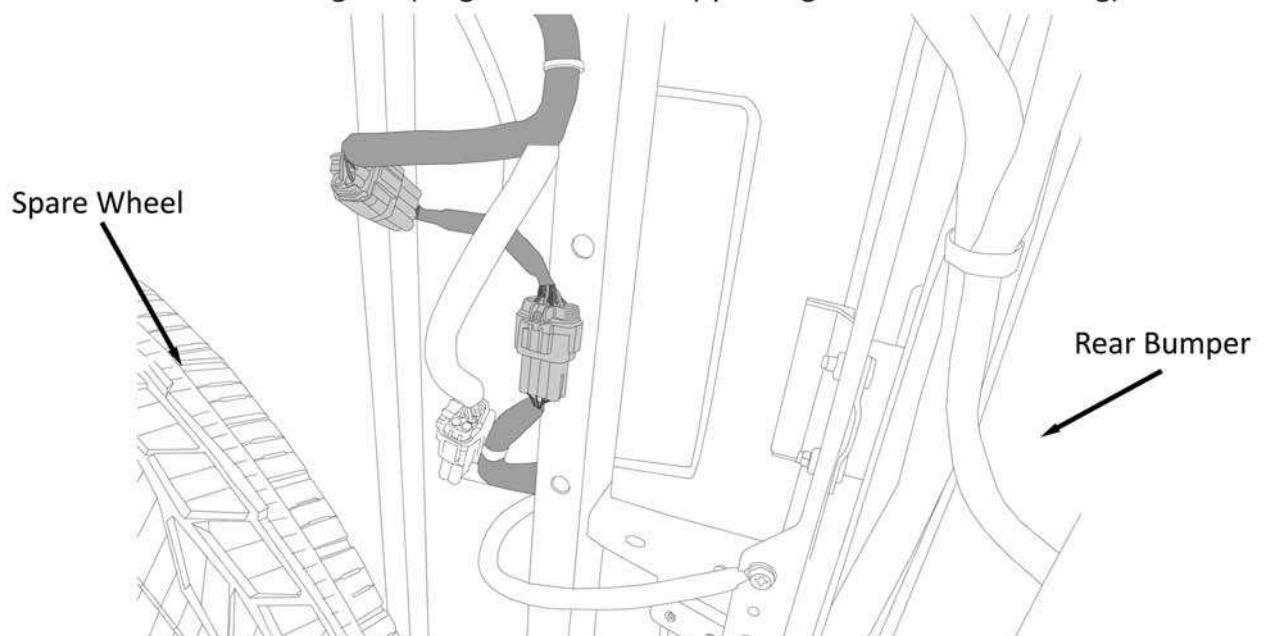
9. Take the loom extension in the engine bay down to the battery and connect the red wire to the positive terminal and the black wire to the negative terminal. Make sure all wiring is secure and away from hot or moving parts.

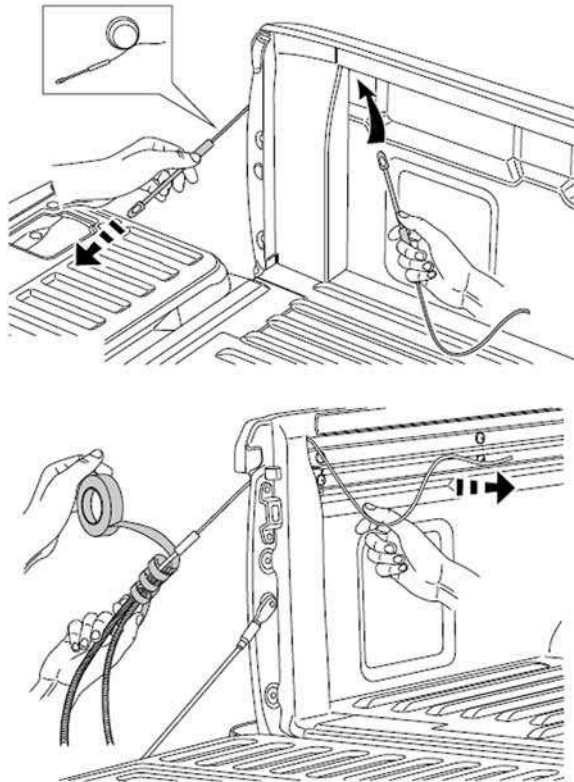
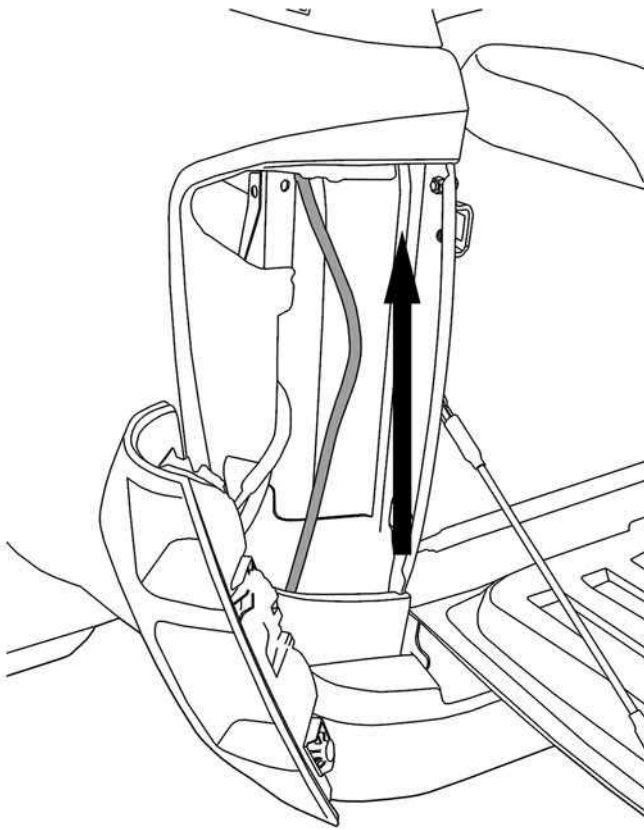


10. Take the rest of the wiring loom and route it to the rear of the vehicle securing the wiring to existing looms where possible. Keep wiring away from moving parts and suspension components.



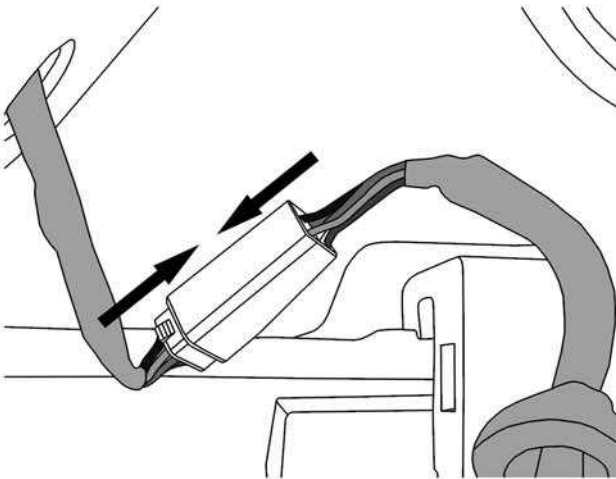
11. Route the wiring across the rear of the under side of the vehicle to the **driver** side. Under the load bed are behind the bumper you will find the connection to the brake lamp as shown in the below diagram (diagram shows canopy wiring in line with OE wiring).



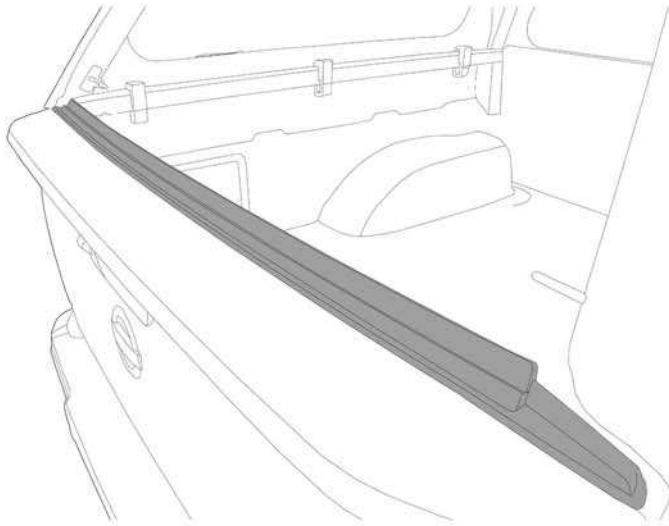


12. Remove the **driver** side tail lamp. Route the canopy wiring loom from under the rear bumper into the lamp area. Using a pull through tool feed one end from inside the load bed up into the load bed lip and through into the tail lamp area. If tools are available remove the pins from the plug. Attach the end of the canopy wiring loom onto the pull through tool and take the wiring into the load bed of the vehicle.

13. Secure the wiring where possible and replace the tail lamp of the vehicle. Connect the the plug of the canopy to the socket of the loom and feed the wiring into the canopy until the rubber grommet fills the hole on the canopy.

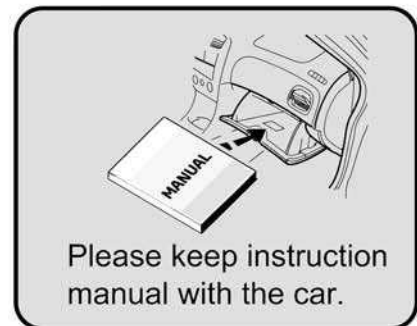


14. The fitting kit also contains a plastic trim for the vehicle tailgate. Thoroughly clean the vehicle tailgate OE plastic using an alcohol based cleaner to remove grease and dirt. The trim attaches using a pre-applied double sided automotive grade tape, it is advised that the trim is fitted when the tailgate is dry and in temperatures over 10°C. Peel the protective film from the tape to expose the adhesive and firmly place the trim into position on the tailgate. Press firmly to ensure the trim adheres to the tailgate.



Please note that the canopy handle must be in the locked position for the central locking to function.

Ensure the fitting instruction is kept with the vehicle.



Optional Roof Rail Fitting Instruction

Offer up the brushed alloy extrusion to the moulded void within the canopy roof, centralise and drill through the existing four holes using a 9.5mm drill bit (The inner alloy extrusion is the internal load bearing structure).

Apply a thin bead of silicone externally on the painted roof skin around the drilled holes.

Offer up the roof bars externally and fix through from the inside using the supplied 8x M8 stainless steel cap screws. A 6mm hex key is required and the recommended torque setting is 7Nm

Finally fit the internal plastic to cover the structure by simply pushing until it clicks into place.

